

Kline Farms

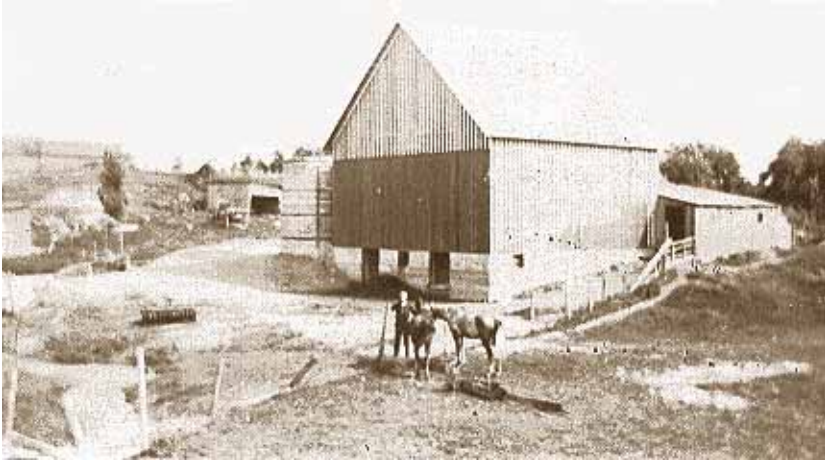
14. ***Kline Farm,
5901 Eight Mile Road



Early View of William W. Kline
Centennial Farmhouse

Henry August Kline also purchased this property on the other (south) side of Eight Mile Road in 1862. William W. Kline, a son of William

Henry's, farmed this land after he was married. The farm is run today by Mrs. William L. (Audrey) Kline, who married William W.'s son.



Early Barn on
William W.
Kline Farm

Pond on William W.
Kline Farm Where
Waterwheel Was
Located

