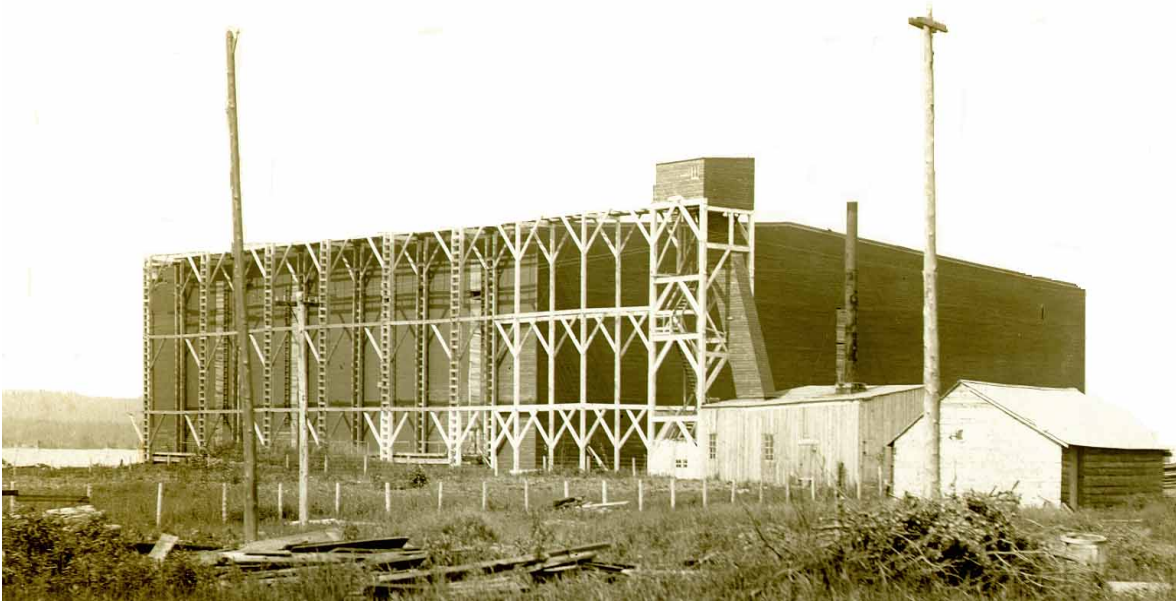


# »Music« Propeller

7. "Music" Propeller, Onekama Village  
Park, south side of the 4700-4800  
Block of Main Street



The "Music" was an ill-fated vessel that shuttled passengers to and from Manistee during the summer of 1899. Displayed in an island off of the drive at the waterfront of the Village Park is the propeller of this boat. The "Music" burned at the end of the 1899 season on September 30, causing quite a grand spectacle as it floated out into Portage Lake that night. An orchestra was carried on board when the "Music" provided moonlight excursions; a piano with a person to manipulate the keys was on board at all other times. The Onekama Lumber Company is shown on the 1900 Sanborn insurance map at this location as being permanently closed. In the September 13, 1907, *Manistee Daily News*, it was reported that E. D. Evans had "the contract for building the icehouses for the Northern Ice Company," which were located at the waterfront of what is now the Park.



In 1914, the Pere Marquette Freight Pier and Warehouse are shown on the insurance map as being at what is now the Park waterfront. When the Village purchased the land in 1934, it had been used by the Crerar Clinch Coal Company of Illinois and contained docks of the previous occupant, Northern Michigan Transportation Company. During 1939, WPA crews developed the Onekama Village Park. Renovations to portions of the Park in 1978 included the building of the bathhouse where the drive of the Park used to be when it formed a continuous loop from entrance to entrance.



Pier Marquette 5 at  
Onekama Dock

