



NEWSLETTER

JANUARY 2016

VOLUME 12, NO. 1

DECEMBER 2015 PRESIDENT'S LETTER

Winter has come to the Portage Lake area, but not like last year. So far we have had 14" of snow compared to 37" last year in the same time period. We have not experienced the cold weather as was predicted, at least so far. There is no ice on Portage Lake, and there are some brave boat fishermen getting in some fishing.

As we go into the 2016, it is worth spending some time on reviewing what the Portage Lake Association did in 2015. Our stated mission is: *The Portage Lake Association is a group of volunteers who are dedicated to making the Portage Lake Area a great place in which to live, play and stay.* Our activities reflect our mission. In 2015, the PLA accomplished and/or supported the following events and activities:

- Petunia Parade – Planting and care of the multi-colored petunias along Main Street in Onekama
- Scholarships totaling \$4500 to students at Onekama Consolidated School
- Financially supported several school projects including class trips for the Freshman and Sophomore classes
- Sponsored fishing tournaments in winter, spring and summer and during Onekama Days
- Lined Main Street with summer Two Lake Town banners and in winter, decorative Christmas Lights
- Continued to work with the Onekama Lions to revitalize Onekama Days – Pancake breakfasts to raise money for Onekama Days, fireworks, promotion and moving the car show and a concert to the Village Park. The PLA also held a Michigan Craft Beer Tasting and a Pig Roast for Scholarships and a Friday Night Concert.
- Monday Night Concert in the Village Park – 8 concerts with a wide variety of music and the highest concert attendance in our history.
- Contributed \$4000 for the repairs to the jetty at the Village Park to maintain universal access to water for fishing
- Fall Festival in the Village Park with a craft show, scarecrow contest with proceeds to the local food bank and free activities for kids that included games, hay wagon and horseback rides and face painting and Balloon Man.
- Christmas in Onekama - Craft show, Celebration of Lights, and Christmas Dinner at M-22 Grill. We also enabled fundraising for the Onekama Student Council with a chili cook-off, and local churches with bake sales.
- Portage Lake Association June Fundraiser and Citizen of the Year – this is our major fundraising event and our annual recognition of someone that has made a positive impact on Onekama. Our net income from this event helps fund some of our activities
- Quarterly Newsletter – communication to the community and our remote friends on what the PLA is doing as well as what is happening in the area with the Township and Village governments, Portage Lake Watershed Forever, Onekama Consolidated Schools, new businesses and general area interest stories.
- WWW.Onekama.info – The Onekama Community web site and the 1,-Onekama, Michigan and the Portage Lake Association Face Book Pages are used to communicate to our community and visitors. The web site continues to grow with more information about Onekama and the region. The site is professionally managed and is self-supported through the business directory that is included on the site. We added a shopping cart to the site so contributions, membership dues and fundraiser tickets can be done on-line in a secure fashion.
- Through our Face Book pages, we collected area photographs that were donated to us and produced the "Photographs and Memories of the Onekama Region" Coffee Table Book. We have sold 200 books and raised over \$5000 to use for community projects. The book is still available and you can order it online.

We have quite a few members that volunteer time to the food pantry, the school, local churches and various community groups and committees like the Planning Commissions, Parks and Recreation Board and the Harbor Commission.

Expect to see new and improved events in 2016. We will be active in assisting the township with the Explore the Shores project at Langland Park (aka the Turnaround). Bathrooms, better parking, universal access to the beach and west dune removal are expected in the next year and a half.

December 2015 President's Letter Con't

All of this comes at a price. It took over 2000 volunteer hours for our activities in 2015. It also takes funds, which means that we have to spend time soliciting support from businesses as well as our members and our neighbors. We have worked hard to make most of our events self-sustaining, meaning that the funds which are raised for that particular event cover the cost. For the remaining events, projects and activities, we use funds that are generated at our June fundraiser. Your continued support of our programs is needed by attending the events or making a contribution. If you have a few hours to spare, consider volunteering with us. ***If you would like to volunteer, please contact our new PLA President Diane Bess at dianembess@gmail.com.*** New volunteers bring fresh ideas with them, help us improve our events and give us renewed energy.

We enter into 2016 with some new officers, board members and committee heads. The list of officers, board members and committee heads is located in this newsletter and is also on the web site. Feel free to contact any of them with your thoughts, comments, ideas or concerns.

In closing, it was a good year for the Portage Lake Association with quite a few accomplishments and with the promise that 2016 looks bright and exciting. I would like to thank all the volunteers that have given their time and talents over this year and past years in developing these events to what they are today. I would like to thank all of the businesses and individuals that donated goods, services and funds to the PLA in 2015. I would like to also thank all the people that attended our events and/or donated to an event. A big Thank You to all the people that contributed to the cause and helped make Onkama and the Portage Lake area a better place to live, play and stay. Finally, I would like to welcome our new slate of officers, board members and committee heads and I am confident that they will carry on the traditions and accomplishments that the Portage Lake Association is known for.

Hope to see you at some or all of our events!

Al Taylor

Report from Onkama Village and Township Community Parks and Recreation Committee:

The committee reviewed the Manistee County-Wide Parks and Recreation Plan, which is unique in that if approved, it would be the only one of its kind in the state. Jon Phillips and Mary Reed are the township representatives to the county-wide parks committee and worked on the development of the plan for the past 14 months.

The plan creates goals and objectives for the townships, cities and villages to further improve, protect and enhance the park system in the county. The complete plan is available for the public to read at the library, township hall and village hall during regular business hours.

Public hearings for the plan are scheduled by the township and village. The township hearing is Tuesday, Jan. 5, 2016 at 8:45 a.m. in the township hall. The village public hearing is Wednesday, Jan. 20, 2016 at 7 p.m. in the village hall.

All residents are encouraged to read the plan prior to the public hearings and offer their input at the hearings.

Check out these opportunities to help make the world a little better:

Manistee County Child Advocacy Center- last year they provided 17 children and families with services. All services provided through the Child Advocacy Center are at no cost to the child and family. All donations are tax deductible and will be used to help residents of Manistee County. Donations can be sent to Manistee County CAC P.O. Box 594 Manistee, MI 49660 for more information, visit their Facebook page at www.facebook.com/ManisteeCountyChildAdvocacyCenter

Manistee County Council on Aging-Senior citizens of today are just as vibrant, mobile, engaged and seeking fellowship as their younger counterparts. Aging, it's everyone's future. Stay active. Stay informed. Stay involved. For more information visit them at www.facebook.com/ManisteeCountyCouncilOnAging or manisteecountcoa.com

The St. Joseph Food Pantry in Onkama serves 150+ families monthly with food as well as some personal care products.

Many families in our area depend upon this service to make ends meet between paychecks. The pantry relies on volunteers and money donations to do their work each month in the basement of St. Joseph Church on 5th St. in Onkama. Monetary donations can be mailed to St. Joseph Food Pantry, PO Box 150, Onkama, MI 49675.

If you have any questions or for more ways to help, contact Leslie Osborn at 231-864-2509

The Annual Christmas Tree Lit Up in Onkama.



Village Of Onekama Council Meeting October 21, 2015

Excerpts from the Planning Commission/report

Hendricks reported they are working very hard on the Master Plan.

SEWER:

President Burger reported a pump in LS #3 will be pulled due to a seal failure. Also reported that irrigation will continue to the end of October.

STREETS:

--President Burger reported that the Dyke St repair project (behind the bank) has been completed. The requested 25 mph road sign for Brown and Zosel is on the list of projects yet to be completed.

PARKS-FARR CENTER

--Trustee Drumm received a quote of around \$23,500. from Swidorski to repair the Jetty. Trustee Drumm has also been in contact with the Township, the PLA and the Little River Band for help with this repair. The Village received a donation of \$500. from Jim and Alina Trout to help with this repair. Thank-you, Mr. & Mrs. Trout!!

PLA/Friendship Committee

--Mary Fairgrieve-contact person presented a request for use of Farr Center as a community center for members to gather over the long winter hours for fellowship, social interaction and learning activities. This new group would be titled Farr Friends. Dates and times have yet to be decided.

EXPLORE THE SHORES-park upgrade

--the dedication of the park was held October 9th.

President Burger thanked Hudson for his help with this project.

TOWNSHIP REPORT

Trees are being marked for removal in Glen Park.

Ruth M. Hudson, Village clerk

For the complete report visit:
<http://www.onekama.info/wp-content/uploads/2011/02/October-2015.pdf>

PETUNIA PARADE 2016

While leaving the grocery store in the village some people from out of town stopped me to ask about the petunias that line main street here in Onekama. Some of their comments and questions were:

" The petunias sure are beautiful"

" What kind are they?"

" Who plants them ?"

" When are they planted?"

After answering their questions and starting for home, I was thinking of the beauty of the lake, the Village Park and how the petunia parade adds to that beauty. I informed them that this was a community effort done by over seventy volunteers. These volunteers come forward every year to plant, fertilizer, weed, their assigned plot with great pride.

A big thank you goes out to all the volunteers who share their time to add to the beauty of Onekama.

If you would like to join this these dedicated people, please call either Nancy Behring at 889-5402 or Jewelee Franklin at 889-4048. It will give you a great feeling of accomplishment and possibility make new friends

And now the petunias are gone for another year as we make way for the scarecrows, which provides fall fun in our community.



A big thank you to all the volunteers that make this happen, and a big thank you to all of the folks that donate funds to this effort.

We could not do this without all of you!

This year, 72 volunteers planted 3800 petunias in 2 1/2 hours. They look beautiful!

If you would like to donate to this effort, you can donate on line at:

<http://www.onekama.info/product/donate-to-the-pla/>



NOTE FROM THE EDITOR:

These two articles were inadvertently omitted from the Summer and Fall Newsletters.

My apologies to all the volunteers who work so hard to make our village beautiful.

Onekama Schools' District Improvement Plan

Annually, the school improvement team embarks on writing the District Improvement Plan. This plan, which is mandated by law, allows for the district leaders to get feedback from students, parents, staff and community members and then incorporate their feedback into action.

The effectiveness of the plan is measured by student achievement as measured by the NWEA test, which is a nationally normed test with results compared to students across the nation, giving three times a school year.

During the 2015/2016 school year the District Improvement Plan will include these strategies:

- Adoption of MAISA units (K12)
- 1 to 1 computers (K12)
- Calendar incorporating specific professional development
- Common prep time to work on DIP goals
- School improvement administration professional development and walkthroughs
- NWEA analysis and communication to students, teachers, parents, and Board Members in a timely fashion
- New math textbooks
- Uninterrupted 90 minute reading/language arts block (K8)
- 5D Teacher evaluation tool

We will access the 2015/2016 strategies at the end of the school year and modify or delete practices depending on their effectiveness in achieving desired student success.

**Check out some of the Scarecrows
made by students at Onekama
Consolidated Schools:**



For the full story and more pictures, visit
<http://ocs.manistee.org/e2016/grade-4/scarecrows-for-the-fall-festival>

PORTAGE LAKE HARBOR COMMISSION *November 19, 2015*

Simons reported that the Invasive Species Committee is waiting the Annual report to be issued by Lake Manager. He is on the agenda for December regarding the proposed fish cleaning station at the DNR Park at Seymour Street.

Burger reported that the work on the Village Park has been contracted out to Swidorski Brothers Construction Company. The cost of the repair is \$23,000 and will be completed as soon as weather permits.

English reported that he had not received the latest Great Lakes Basin Report but there was discussion on the Asian Carp threat.

Blue reported that the Port Collaborative met in Clare and most of the time was spent discussing their involvement in the Waterways Strategy program. He said that Wisconsin has a program where the state has committed \$14,200,000 a year to assist their harbors with dredging and infrastructure repair. The harbor must submit requests and the state chooses the harbors they feel require the most urgent work. Blue said that Senator Boohar had contacted Chuck May (Great Lakes Small Harbors Coalition) and asked what he could do for our infrastructure repairs.

Mrozinski passed out a document that stated that with the new 1.2 billion road funding package coming to the Michigan Waterways Fund an additional \$3.7 million in 2017 and \$5 million in 2018 and beyond will be spent on improving launch ramps, municipal marinas and etc. The gas tax per gallon will be raised 7.3 cents.

Another hand out stated that forty-six lawmakers from the House, including (8) from Michigan, signed a request to continue funding at \$300 million for the Great Lakes Restoration Initiative into 2017. This Initiative includes action to prevent Asian Carp from entering the lakes and targets nutrient runoff reductions in watersheds to reduce algae blooms. Mrozinski said that he had a call from Bill Boik, Chairman of the Michigan Waterways Commission, who said that they have approved \$800,000 for a Structural Stabilization Project for the Portage Lake Channel infrastructure, which should help to stabilize our channel walls until permanent repairs are done. This will not happen until 2017.

*Discussion.....*English reported that there have been 2 new invasive species identified recently in the Great Lakes and that there was an Asian Carp found in Lake Erie..

Next meeting is scheduled for January 21, 2016.

Respectfully submitted,
Jim Simons





... People To Know...

Meet Debbie Tiefenthal, whose smiling face you see at the M-22 Cafe. She greets you with a warm smile and friendly words as she makes sure you have a great cup of coffee, as well as taking your order and making sure all is well with your meal. She has been a fixture there for the past 6 months.

Besides enjoying talking and serving her customers, she loves the view out the back of the restaurant, with its ever changing lake scenes. She fondly recalls going outside during hunting season and scaring some deer that had found a spot to hide

in the lot next to the Cafe. In addition to her work at M-22 you may also know her as a clown. She has been making children smile for 30+ years and is a fixture at the Onekama Fall Festival, painting faces.

She has lived in the area for 27 + years and her son and daughter both graduated from Onekama High School. She was very active in the school as Class Advisor and helped Onekama students raise money for various events. She also ran a costume rental business for 23 years-you may see some of her costumes in Manistee High School dramas, as they were able to purchase many of them when Debbie decided to take a break. She did keep 80 of her favorites! Stop by M-22 and say hi.

Volunteer Opportunities at Onekama Consolidated Schools **2015-2016 School Year**

There are several opportunities for community volunteers at the Onekama Consolidated School. This is a great opportunity to help make a difference with students that need some extra help, but also with students that would like some additional challenges in their education.

If you are interested in any of the following volunteer activities, call Al Taylor at 231-889-0205 or email at windsongmi@aol.com. All activities start after Jan 1, 2016. First level background checks are needed, and there will be a training session sometime in January.

Quiz Bowl – volunteers at 2 levels – High School and middle School, 1 hour per week, 10 weeks. 2 volunteers needed, times to be established

Assist art teacher in hanging art work in school every month

Group reading with elementary students – students are at or below grade in skill level - 8:30-9:30am, 2 times per week if possible – Tuesday, Thursday

Working with above grade level readers in literature circles or reading activities – 8:30-9:30am, 2 times per week Monday, Wed

Project based math learning with kids that need extra math challenges – work with teacher on extension activities in Math 3rd, 4th and 5th grade - 10:30am to 11am, 2 times per week

Working with Middle School students with basic math skills – work with 6th, 7th and 8th graders at 8am or 11am

Career presentations to middle school students – college and career presentations

A few good men willing to work with students who have been borderline bullied – work with kids on both sides of the issue – discussions on Character Building

At the high school, help students qualify for scholarships but are not taking the time to apply
Career presentations to middle school students – college and career presentations.



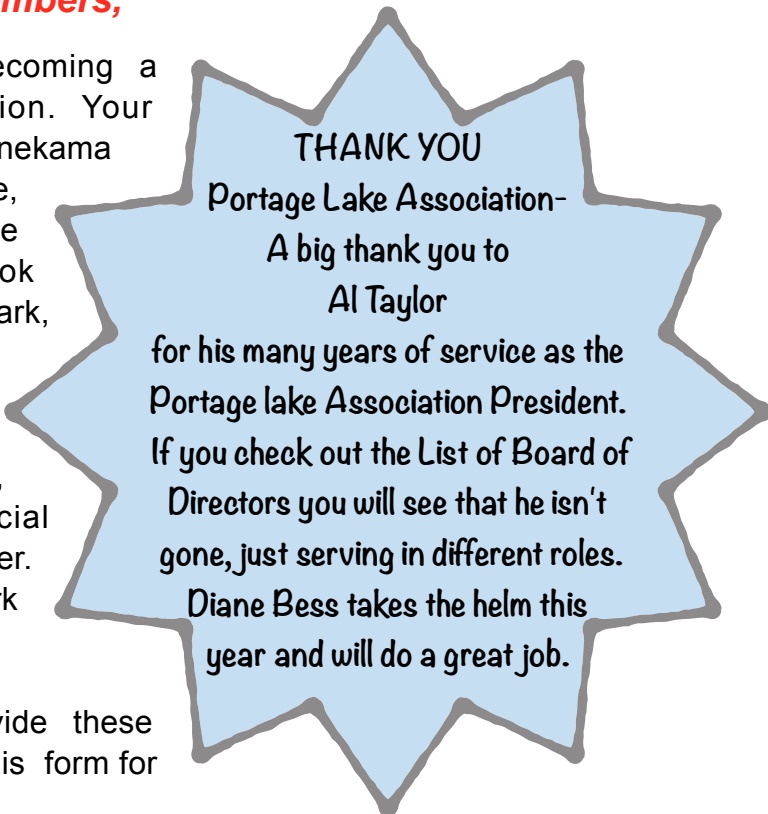
2016 Portage Lake Association Officers, Board of Directors and Committee Head

<u>Type</u>	<u>Title</u>	<u>Name</u>	<u>Email</u>
Officer	President	Diane Bess	dianembess@gmail.com
Officer	Past President	Al Taylor	windsongmi@aol.com
Officer	Vice President	Julie Lapinski	maizetandem@aol.com
Officer	Treasurer	Evie McNeil	evelyn@chartermi.net
Officer	Secretary	Faye Backie	faye.backie@gmail.com
Board Member	3 year (in 3 rd year)	Barb Wolverton	barb@alpinemotorlodge.com
Board Member	1 year	Susan Barnard	wildbarn@att.net
Board Member	2 year (in 1 st year)	Frank English	nmicarguy@gmail.com
Board Member	3 year (in 1 st year)	Al Garbrecht	garbrechtb@gmail.com
Board Member	1 year	Paul Mueller	jane-paul@sbcglobal.net
Board Member	1 year	Mary Fairgrieve	marycfairgrieve@gmail.com
Board Member	1 year	Nikki Torrey	ntorrey@manistee.org
Board Member	2 year(in 1 st year)	Jean Capper	jmcmom@aol.com
Board Member	1 year	Pat Pomaranski	patpomaranski@gmail.com
Board Member	1 year	Cynthia Kadzban	lovebiking@live.com
Committee Head	Petunias CoChair	Jon Phillips	jphillips2939@gmail.com
Committee Head	Petunias CoChair	Tammy Messner	tammy.h@charter.net
Committee Head	Petunias CoChair	Marilyn Acker	none
Committee Head	Fall Festival CoChair	Jeff Sternberger	jsternberger@chartermi.net
Committee Head	Fall Festival CoChair	Susan Halloran	snhalloran@yahoo.com
Committee Head	Xmas Lights and Banners	Chuck Reed	creed4573@yahoo.com
Committee Head	Lake Information	Mary Reed	mreed4573@yahoo.com
Committee Head	Concerts in the Park	Steve Szilvagy	szilvagy@gmail.com
Committee Head	Onekama Days	Al Taylor	windsongmi@aol.com
Committee Head	Pig Out for Scholarships	Bruce` Peabody	brucepeabody@gmail.com
Committee Head	Beer Tasting at	Steve Szilvagy	szilvagy@gmail.com
Committee Head	Membership	Barb Wolverton	barb@alpinemotorlodge.com
Committee Head	Publicity	Faye Backie	faye.backie@gmail.com
Committee Head	Web Site	Al Taylor	windsongmi@aol.com
Committee Head	Publicity – Facebook	Al Taylor	windsongmi@aol.com
Committee Head	Scholarships	Roz Jaffee	rozjaf@charter.net
Committee Head	Citizen of the Year	Margaret Punches	margaret.punches07@gmail.com
Committee Head	Christmas In Onekama	Pat Pomaranski	patpomaranski@gmail.com
Committee Head	Craft Show, Celebration of Lights	Pat Pomaranski	patpomaranski@gmail.com
Committee Head	Celebration of Lights Outside	Frank English	nmicarguy@gmail.com
Committee Head	Craft Show	Pat Pomaranski	patpomaranski@gmail.com
Committee Head	Chili Cook-off	Jeff Sternberger	jsternberger@chartermi.net
Committee Head	Farr Friends	Mary Fairgrieve	marycfairgrieve@gmail.com
Committee Head	Newsletter Editor	Jean Capper	jmcmom@aol.com
Committee Head	Fundraiser CoChair	Al Taylor	windsongmi@aol.com
Committee Head	Fundraiser CoChair	Diane Bess	dianembess@gmail.com
Committee Head	Winterfest	Jamie Miester	jamie_m_816@yahoo.com
Committee Head	Tapestry Sale	Mary Fairgrieve	marycfairgrieve@gmail.com

Dear PLA Member and Future PLA Members,

Renew your membership or consider becoming a member of the Portage Lake Association. Your membership support helps us provide the Onekama Region with the www.onekama.info web site, the 1,- Onekama, Michigan and Portage Lake Association, Onekama Michigan FaceBook pages, Monday Night Concerts in the Park, Onekama Days events, Fall Festival, Christmas in Onekama, Main Street Petunias, Summer Banners, Holiday Lights in the Village, local fishing tournaments, Onekama School scholarships and special school programs and our quarterly Newsletter. We have also made grants to various park projects in both the township and the village.

Your continued support will help us provide these activities and some new ones in 2016. Below is form for your 2016 membership.



THANK YOU
Portage Lake Association-
A big thank you to
Al Taylor
for his many years of service as the
Portage lake Association President.
If you check out the List of Board of
Directors you will see that he isn't
gone, just serving in different roles.
Diane Bess takes the helm this
year and will do a great job.

.....

Membership Application - Portage Lake Association

Name: _____

Mailing Address: (must be deliverable to this address)

Telephone: (H) _____ (Cell) _____

Email Address: _____

Dues are \$30 annually Check here if you would like to volunteer for PLA activities or events: _____

***Make Checks payable to Portage Lake Association and send along with this form to
Portage Lake Association, Memberships, PO Box 493, Onekama, MI 49675***

Portage Lake Watershed Forever

2016 PLWF Council

Chair — Mary Reed

Vice Chair — Kathy Ervin

Treasurer — Jim Simons

Secretary — Bee Capper

Alice Hendricks, Herb Lenon, Jai

Meister, Jim Mrozinski,

Update

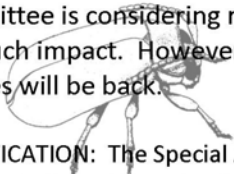
(PLWF Water Quality & Environmental Monitoring Committee)

Phragmites Treatment

The amount of phragmites treated this year was the smallest amount ever. In 2009, 84 acres were targeted; this year only 4 acres needed attention. A walking survey of the entire shoreline of Portage Lake was conducted in September; all invasives found were treated.

Purple Loosestrife

Four acres of this attractive invasive were found and treated September at the same time as the phragmites. The committee is considering re-introducing beetles to control it although when they were released in 2013 there wasn't much impact. However, because several factors have changed, if enough loosestrife is detected next year, the beetles will be back.

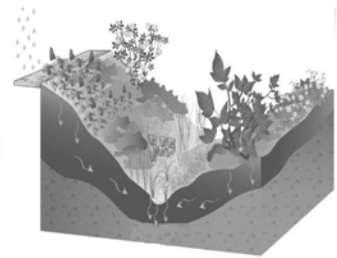


CLARIFICATION: The Special Assessment District was established to control invasive species in and around Portage Lake, *not*, as some believe, throughout the entire Township. Consequently, Autumn Olive (a true scourge) and other invasives not adjacent to the lake, are not impacted by the SAD, sad to say.

RAIN GARDENS

Rain Gardens are shallow, constructed depressions that are planted with deep-rooted native plants and grasses. They fill with a few inches of water after a storm and permit the water to filter into the surrounding soil, rather than entering a lake or stream.

Capturing rainwater in a rain garden, holding it, and then slowly releasing it into the soil, lets the rush of runoff from a large storm can be slowed and cleaned – quickly, neatly and naturally.



The Watershed received a \$1,000 grant from the Manistee County Community Foundation's Environmental Fund with support from the Oleson Foundation as part of the Explore the Shores Program to build one this year at the Farr Center. We will be partnering with members of the Portage Lake Garden Club, the Manistee Conservation District staff, and with Rob Carson, Manistee's City Planner.

Election News Hail/Farewell

There wasn't much hoopla surrounding PLWF's recent election of officers but it is worth mentioning that, while **Mary Reed** remains Chair, some changes took place: **Kathy Ervin** fills the vacant Vice-Chair position; **Frank English** stepped down as Treasurer but remains on the Council. He was replaced by **Jim Simons**; and, **Bee Capper** is taking over as Secretary. **Ted Lawrence** joined the Council as a member while **Dan Behring** bid us farewell.

It is more than worth noting that we owe a debt of gratitude to **Dan Behring**. He has been relentless in his commitment to the watershed and to meeting the PLWF Plan's goals. He has chaired committees, drafted plans, done research, written letters, initiated and facilitated our education forums, and attended countless meetings. There is no doubt he will be missed and we wish him well.

ONEKAMA TOWNSHIP BOARD REGULAR MEETING

TUESDAY, DECEMBER 1, 2015, 9 A.M.

DRAFT for a full report visit: <http://www.onekama.info/wp-content/uploads/2011/02/TWPBDREGMTGDEC-2015.pdf>

CLERK'S REPORT: Mathieu reported the deadline is Dec. 15 to add anything to the March 8th primary election ballot. This is a closed primary which means voters will choose a Democratic or Republican ballot. If a proposal is sought, there would be a third ballot. A workmen's compensation audit was conducted for the township. Mary Lou Millard read an article she wrote for the MTA magazine "Township Focus" section. Al Taylor took a photo of the township hall to submit with the article. The budget report was presented to the board for its review.

TREASURER'S REPORT: Beebe reported due to the end of the month bank statements received, the tentative balance for November in the General Fund is \$48,474.37; tentative balance for November for the Fire Fund is \$113,266.60.

COMMISSIONER JEFF DONTZ: Dontz reported a new sound system is being installed on the building at a cost of \$11,000, there may be a 1 to 5% decrease in parcel charges by the equalization department; 20 beds have been added to the hospital. The Walk-In Clinic, which had 7,000 patients, will move to the hospital side of the road. He said the sewer project along U.S. 31 will be completed in February, 2016.

SEWER PROGRESS REPORT: Meister reported a full application meeting was held with the consultant and USDA representative.

PORTAGE LAKE HARBOR COMMISSION: Jim Simons reported on the proposed fish cleaning station. He talked to the DNR and Health Department, and said there is no specific regulation for a septic system or a fish cleaning station. He discussed possible methods of a clean disposal. Bill Boik, chairman of the Michigan Waterways Commission notified the Harbor Commission that the Waterways Commission has approved \$800,000 for a Structural Stabilization Project for the Portage Lake Channel infrastructure, which should help stabilize the channel walls until permanent repairs are done. This will not happen until 2017.

FIRE/RESCUE: Fire Capt. Clinton Osborn reported 8 fire runs, 10 rescues, 5 JAWS runs and 1 meeting for the month of November. The Annual Air pack testing will be this month-- Air tanks have been hydro tested. Township fire department members Kaitlin Kubiskey, Roger Cody and Bryson Waller passed the EMR class for Manistee County fire personnel. A graduation ceremony will be from 6:30 to 7:30 p.m. Thursday, Dec. 3. Thomas Koon and Kubiskey have asked to take the FFI/II class this year in Manistee County. Osborn is taking the Fire Instructor I class in Ludington and has signed up to take a Search Management class in February. The Revenue Sharing Awards presentation is Monday, Dec. 14. The township has applied for grants for JAWS tools.

BOARD OF REVIEW: Assessor Ginny Martz reported five affidavits will be acted on during the December 15 Board of Review meeting, which begins at 9 a.m. She has received tentative appraisal studies from the Equalization Department. The agricultural class came in at 51.23%; commercial, 48.88%; industrial, 49.05%. These studies will be reviewed soon. The database with the latest PRE'S were submitted electronically to Equalization on Nov. 3, and she is still in balance with the county. The Treasurer's warrant was checked on Nov. 10 and signed Nov. 30. Inspections of new and ongoing construction is ongoing, cards are being updated. Most of the deeds, transfer affidavits and all of the PRE'S and rescinds have been processed.

COUNTY--WIDE PARKS & RECREATION PLAN: Jon Phillips reported township board members and parks and recreation committee members will receive the excerpted portion of the county plan, which focuses on Onekama Township. The township's public hearing on the complete plan will be 8:45 a.m. Tuesday, January 5, 2016 prior to the board's regular meeting.

LANGLAND PARK: Taylor reported that Tim Knutson met with the DNR to make sure everything is in place for the ongoing process.

PLA: Taylor reported that the Christmas in Onekama was successful; Winterfest is not planned yet; Christmas lights are up. Diane Bess is the new PLA president.

INVASIVE SPECIES: Chairman Mary Reed reported the land management manager is working on reports and maps. The group's meeting is Tuesday, Dec. 1, with election of officers on the agenda.

PARKS: In response to a request for financial help for the Petunia Parade sponsored by the PLA, consensus of the board is that this is the PLA's endeavor and should remain as such.

ROADS: The board will ask the county clerk and township attorney about language for the millage renewal question on the March election ballot. Road projects were discussed, such as seal coating and other maintenance projects. At present, the road fund budget balance is \$118,320.05. Wisniski reported the county road commission purchased a new pickup truck for its new foreman, hired two drivers for the winter and said employees will receive \$35 gift certificates for Christmas.

Helen Mathieu, Clerk Onekama Township

Santa Visits Junior Clio



Onekama Teachers Embrace New Technology

Wednesday, August 13, was an eventful day at Onekama Consolidated Schools. An all-school inservice was held for K-12 instructional staff and office staff to prepare for an exciting addition to the 2014-15 school year: the implementation of One-to-One technology.

In September, every student at Onekama Consolidated Schools will receive a new device. Students in Kindergarten through fifth grade will receive iPad tablets; middle school and high school students will receive MacBook Air laptop computers. Students will have access to these devices at school and at home.

In preparation for the 1:1 technology initiative, staff received training on best practices for utilizing these devices in the classroom. The inservice included both all-staff sessions and grade-level-specific breakout sessions.

"Our goal is to roll out this technology to well-informed and prepared students by instructors who are equipped, knowledgeable and ready for successful implementation," stated Onekama Superintendent Kevin Hughes.

"When the school doors open on September 2, our staff and students will be ready to use these new devices to create meaningful learning experiences."

Stay tuned for an update on how the implementation is going in the next newsletter.



Winter 2016 NEW 12-week session!

Classes start Monday, January 4 and conclude Saturday, March 26

Our Winter session begins in January this year and concludes before Spring Break...because that's what you requested, and we delivered! Come join us for some Winter fun while the snow flies outside. As always, if Onekama Schools are closed due to inclement weather, classes will not be held.

Call Mary Bergren at OCS 889-4251 to sign up. Deadline for sign ups is Wednesday, December 30, 2015.

Beginning Karate

This Karate class is perfect for beginners from 5 years and up, families encouraged. The students will be introduced to the Matsumura Seito style of Karate. Together we will learn the basic blocks, kicks and strikes along with some self-defense techniques and beginner katas. Students should wear comfortable clothes that allow good movement. Come prepared for physical activity and fun!

Saturday 9:40 to 10:40 a.m. 12 sessions \$45 per person or family rate (two people) \$80 with Duncan.

NEW! Karate Intermediate Beginner

This class is intended to be instructional continuation for those students who have already attended the Beginning Karate class. In this class students will build on their previous experience and be introduced to more Katas as well as Wazas. The students will be expected to memorize and individually demonstrate Katas as well as Wazas using proper form and power. In addition to getting more in depth with forms, the students will also be introduced to many more block, kick and strike combinations that can be used for self defense but are also incorporated into Katas and Wazas.

Wednesday 6:45 to 7:45 p.m. 12 sessions \$45 per person or family rate (two people) \$80 with Duncan.

Power 60

Sixty minutes of indoor cycling, jogging, core strength training, balance and agility in interval format to heart pumping music. We use every "toy" in the house, BOSU balls, stability balls, light weights, battle ropes, even Solo cups and paper plates! This hybrid class provides the best of everything in the fastest 60 minutes of your day. No boredom allowed in this session. It's all about never doing the same thing twice. Moderate to high intensity workout. 24 sessions.

Monday and Wednesday 6:00 to 7:00 a.m. with Leann in the Activity Room \$75

Indoor Cycling Plus

This cardio workout is intense but fun. In addition to cycling, this class includes up to 15 minutes of core and balance exercise. Cycling portion is conducted on indoor upright stationary bicycles to high energy music. Focus on interval training and techniques used in an outdoor ride. Beginners and experienced cyclists welcome. Class is instructor led but self-paced. Our new package format allows you to sign up for as many classes during the week as you would like. **Sign up for two evenings or more and pay only \$37 per session instead of \$40.**

Monday with Kim 5:30 to 6:30 p.m. in the Activity Room \$40

Tuesday with Leann 5:30 to 6:30 p.m. in the Activity Room \$40

Wednesday with Kim 5:30 to 6:30 p.m. in the Activity Room \$40

Thursday with Leann 5:30 to 6:30 p.m. in the Activity Room \$40

Winter 2016 NEW 12-week session! Con't

Gentle Yoga

Gentle Yoga provides the proven benefits of yoga (better posture, balance, strength, stress relief and improved mind body connection) in a modified and less strenuous form. Positions are not as rigorous and movement is slower with care taken to insure a gentle yet thorough and restorative yoga experience. Perfect for beginners or those who prefer a less intense workout.

Tuesdays and Thursdays 5:30 to 6:30 p.m. in the Media Center with Skye. \$75

Stretch, Strength and Balance

A strong core, flexibility and balance are your most important assets regardless of your fitness level. This class incorporates core strength training, light weight training upper and lower body workouts, stretching and balance practice for an overall effective yet not so strenuous workout.

Monday and Wednesday with Tonya 4:15 to 5:15 p.m. in the Fitness Room \$75

Curved Block Sampler Quilt

Learn to make curved seams and use one simple block to create a variety of designs. This class will focus on curved seams, using templates, (creating templates), adding sashing strips, cornerstones and borders. The skill level recommended for this project is confident beginner. The completed project measures 78 x 62.



6:00 to 8:00 p.m. 6 Wednesdays, starting 1/13/16 and ending 2/17/16. Cost \$40; need minimum of 6 people

Barre and Cardio

Like to stretch but need a bit more? This fun 45-minute class combines barre exercise emphasizing stretch and strength, with up tempo music and simple aerobic moves that will increase your heart rate to a moderate level. No tutus required, just exercise based on basic barre moves.

4:30 to 5:15 p.m. Tuesdays and Thursdays with Leann in the Activity Room \$60

POUND!

High energy fun that doesn't look like a workout, POUND is a full-body cardio jam session combining light resistance with drumming using POUND RipStix. This 45-minute percussive workout fuses cardio, pilates, isometric movements, and rhythm to today's pop tracks. Check it out on Youtube by searching "Pound Fit." Get your Rock Star on and prepare to sweat!

Monday and Wednesday, 5:30-6:15 p.m. with Leann in the Media Center \$60

ONE SESSION WORKSHOPS

Self Defense

This class is intended to be an intense two-hour introduction to self defense best suited for ages 16 and up as it is mostly "hands on" practical technique learning. There is no prior experience or physical fitness requirements. This class is great for female as well as male participants! The students will be guided through proven techniques to defend against various common attack moves. Students should wear comfortable clothing that allows good movement and also be prepared for controlled light physical contact with other students in order to perfect techniques.

Choose from two sessions: *Wednesday, January 27, 6:45 to 8:45 p.m.* *Saturday, February 6, 1:30-3:30 p.m.*
Cost is \$5 per person

Weight Training Workshop

We often associate weight training with big muscles and bulky human frames. But the real purpose of weight training is to improve quality of life, build stronger bones and tissues and increase stamina and strength needed for everyday living. In other words, Weight Training is for everyone! Weight Training equipment can look intimidating, especially if you're not sure what to do with it. This short 2-hour "hands-on" workshop will focus on the proper use of the weight training equipment located in the OCS Fitness Center with an emphasis on appropriate form and development of individual goals. Ages 16 years and older are welcome to participate.

Choose from two sessions: *Wednesday, January 20 7 to 9 p.m.* *Saturday, February 6, 11 a.m. to 1 p.m.*
Cost \$5 per person

Personal Fitness Training

Need a fitness plan that is more individualized? Our American College of Sports Medicine Certified Trainer works with clients to assess overall health and fitness levels and then helps clients begin an exercise plan specific to individual needs. The \$100 package includes fitness assessment and orientation, and two 1-hour sessions that introduce clients to their individualized programs. Continued training is based on an hourly rate. *Contact Mary at 889-4251 to set an appointment.*



JANUARY 2016 NEWSLETTER

planewsed@gmail.com, Newsletter Editor

PSRT STD
U.S. Postage
PAID
Bear Lake, MI
49614
PERMIT #15

Portage Lake Association • P.O. Box 493 • Onkama MI, 49675

POSTAL PATRON

1, Coffee Table Available To Purchase Online:

<http://www.onekama.info/1-coffee-table-book-now-available/>



It is a hardcover book, 8.5 " by 11" and has 46 pages with 77 photos of the Onkama Region. It costs \$50 (I have one and it is worth every penny!) and can be shipped for an additional \$5.

Well over 500 photos were submitted to the Share Your Photos of the Onkama Region and the decisions on which ones to include was difficult.

Photos were selected in part by the responses we got on Facebook, quality of the photo and subject matter. We could have had 77 sunset photos, but that would not have been representative of the beauty of the area or what makes the Onkama region so special.



FARR FRIENDS - A New Program Starts in January!!

The PLA is sponsoring a community program at the Farr Center for newcomers and long time residents of the Onkama area to meet and greet one another. The PLA is making this program available to all who wish to come together for socializing and learning.

The Farr Center, which was donated to the Village for the purpose of creating a community gathering place, will be reserved several days each month for two hour blocks. During these times, you can come and play: cards (eg. bridge & euchre), games (eg. cribbage & mahjongg), puzzles, musical instruments. Or if you like crafts, you may knit, crochet, scrapbook, or make jewelry.

Come by yourself ...or organize a group to meet at the Center. Bring your own project or game. Multiple activities will likely be going on at the same time, so feel free to learn from others or offer to teach who want to learn.

The options are limited only by the imagination of those attending. Each interest group will be self organized and directed. Just bring your supplies and enthusiasm!

Parking is available next to the library- enter through the center door off of Main St.

The center is reserved from 2pm – 4pm on these dates for the first month of the program:

Jan. 7
Jan 12
Jan 21
Jan 26
Jan 28

Future Farr Friends dates will be scheduled monthly and published on the www.onekama.info website calendar and on the 1, Facebook page.