

# WHAT IS THE PETUNIA PLAN FOR 2026?



In the January PLA Newsletter, the Petunia Parade Committee explained the community survey recommendation to transition from petunias in the ground to petunias in hanging baskets. Here is the plan for the upcoming summer.

We will place eight hanging basket “units” on the north and south sidewalks of Main Street between Mill Street and Portage Street. Each “unit”

consists of a moveable base, a ten-foot post, and two hanging rings. Here is a hand-drawn diagram of the base, pole, and rings. These are being purchased from a specialty greenhouse owner who has used them across the United States with many customers along the western side of Michigan.

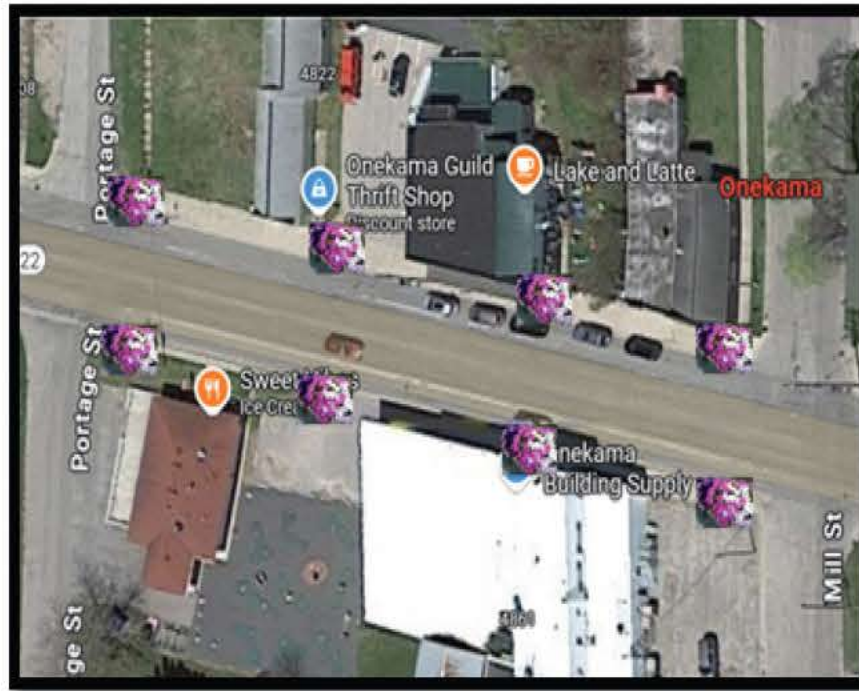
Two H2O water saver containers will be placed into the rings, thus sixteen hanging baskets. They will contain an assortment of Proven Winners Supertunias in the typical Onekama colors of whitish, pinkish, and purplish. The cultivars are called Vista Fuchsia, Vista Cool Jazz, Vista Jazzberry, and Vista Silverberry if you are into botanical names. The container itself has an upper chamber for the soil and plants, while a lower reservoir holds 2.5 gallons of water to ensure adequate hydration for the flowers; wicks connect the two chambers.

Appearance Salon owner Linda English and Onekama Building Supply manager Mike Cox are donating use of their water and hoses this summer. Resident Ed Pruyne has been recruited to be the watering czar.

Here is a bird’s eye view of what this should look like.

You might ask, “What is the rationale for this plan?” We are happy you asked because there are a lot of moving parts to Main Street and the sidewalks in Onekama. The Trail Project and implementation of parts of the Onekama Village Master Plan are still under development, so it seems like a waste of money to put anything permanent like stationary posts into the ground. This solution focuses on five attributes:

- **Flexibility:** this investment now will not be wasted because these hanging basket units are moveable. They could be located at the Village Park, the event stage, or at other locations throughout the Village.



- **Familiarity:** we chose the same genus of flowers because we are familiar with petunias, although this will be a different cultivar than we have used in the past. Pleasanton Valley Greenhouses will supply the plants, and they are a trusted partner.

- **Labor Saving:** lack of committed volunteers to weed petunias has been an issue; hanging baskets eliminate the need for weeding. The watering container we have chosen has documented labor savings for watering. Check it out at this website: <https://www.h2olaborsaver.com/>

- **Buy “Local”:** the new vendor for the base, posts, hangers, and containers is a Michigan company with glowing references. We learned about them after watching an online webinar about the town of Castle Rock, Washington which has hundreds of their products in use. For more information, watch this webinar: <https://youtu.be/z5zWsvhB8Hw>

- **Adaptability:** as plans for the trail or sidewalks progress, this program can grow with it.

For more information, contact Mary Jo McElroy at [maryjomcelroy@sbcglobal.net](mailto:maryjomcelroy@sbcglobal.net)