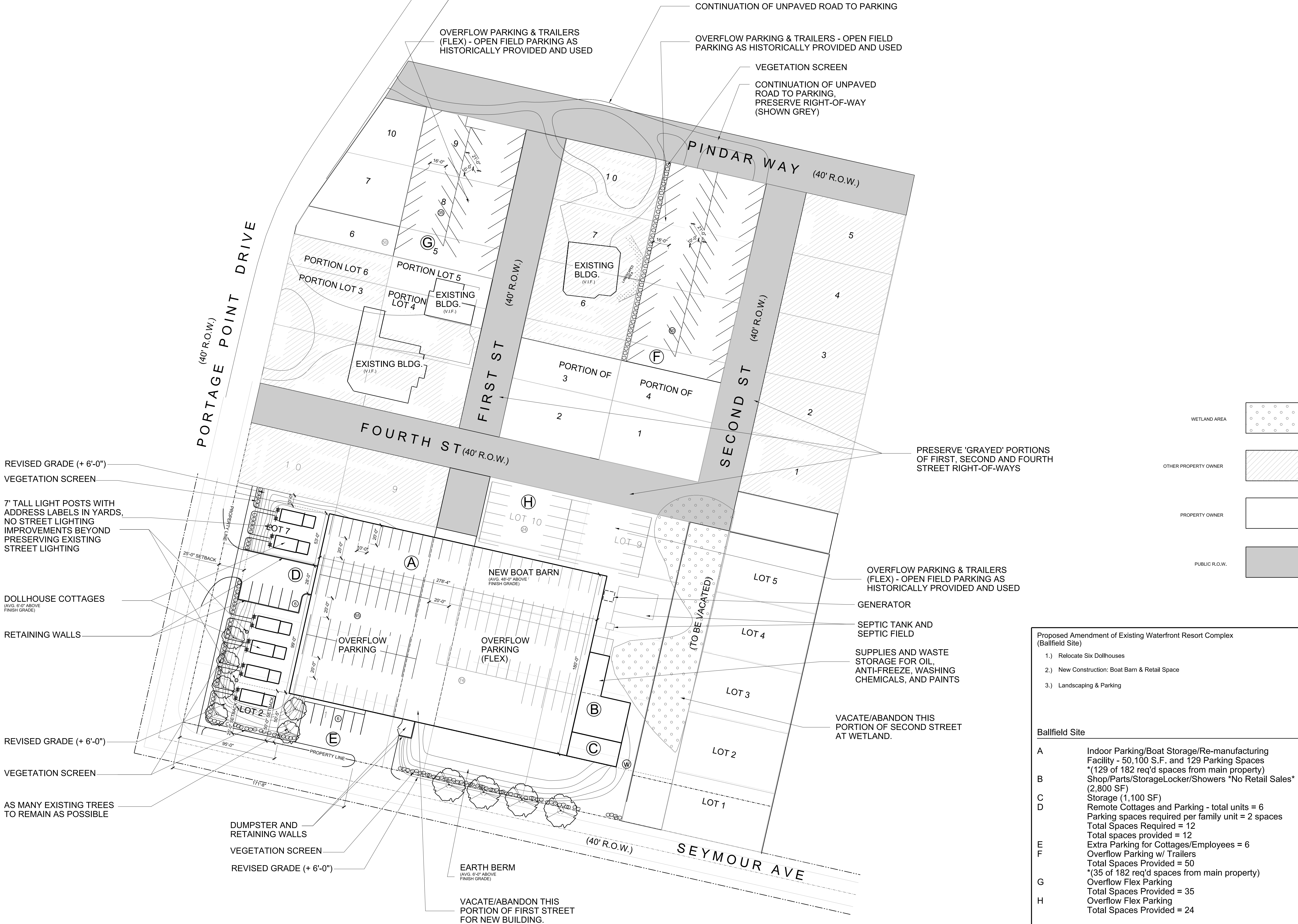


*NOTE: THIS DESIGN DRAWING IS FOR PLANNING AND SPECIAL USE PERMIT APPLICATION AND IS NOT INTENDED TO BE USED AS A CONSTRUCTION DOCUMENT.



PROPOSED SITE PLAN

SCALE: 1" = 40'

Proposed Amendment of Existing Waterfront Resort Complex (Ballfield Site)	
1.) Relocate Six Dollhouses	
2.) New Construction: Boat Barn & Retail Space	
3.) Landscaping & Parking	
Ballfield Site	
A	Indoor Parking/Boat Storage/Re-manufacturing Facility - 50,100 S.F. and 129 Parking Spaces *(129 of 182 req'd spaces from main property)
B	Shop/Parts/StorageLocker/Showers *No Retail Sales* (2,800 SF)
C	Storage (1,100 SF)
D	Remote Cottages and Parking - total units = 6 Parking spaces required per family unit = 2 spaces Total Spaces Required = 12 Total spaces provided = 12
E	Extra Parking for Cottages/Employees = 6 Overflow Parking w/ Trailers Total Spaces Provided = 50 (35 of 182 req'd spaces from main property)
F	Overflow Flex Parking Total Spaces Provided = 35
G	Overflow Flex Parking Total Spaces Provided = 24
H	Overflow Flex Parking Total Spaces Provided = 24

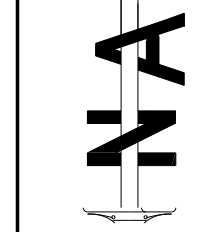
Site Plan Submittal	
Design	KAB
PM / PA	MC
Drawn	KAB
IA Project Number	20130803

PROPOSED SITE PLAN

SP2.0

Portage Point Inn
- Ballfield Site

Windfalls Landings, LLC
5145 Industrial Park Drive
Montague, Michigan 49437
Proposed Site Plan of Portage Point Inn
8557 South Portage Point Drive
Ondans, Michigan 4975



NORDLUND & ASSOCIATES, INC.
Providing Professional Engineering & Surveying Services Since 1972
103 E. Ludington Ave.
Ludington, MI 49631
FAX: (231) 843-7878

Integrated Architecture
4090 Lake Drive SE
Grand Rapids, MI 49546
616.574.0220 P
616.574.0933 F
www.intarc.com